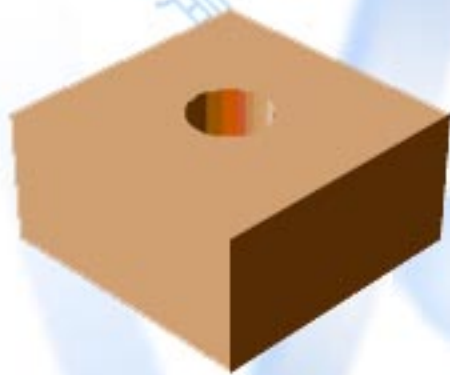


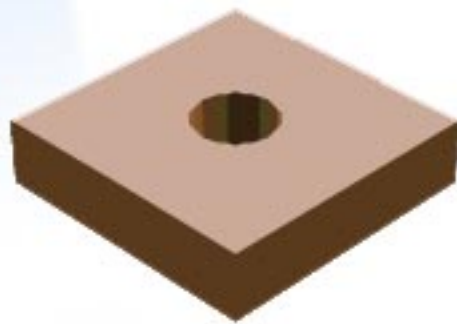
CDM

CDM-ISO-FIX-PAD

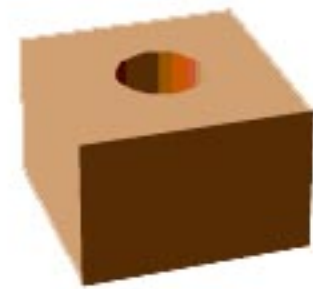
Job Type	CDM is OEM of certain resilient components used in the
Start of supply	compressors of Atlas Copco
Number of parts	since 1996
Main product	approx. 10
Departments	Corkrubber of the family CDM-CR



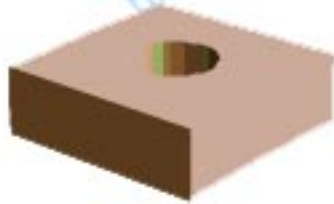
PAD CDM-64 40X40X20 Ø12mm



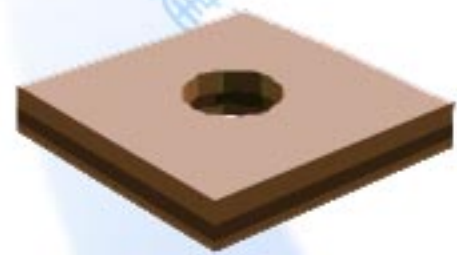
PAD CDM-62 40X40X10 Ø12mm



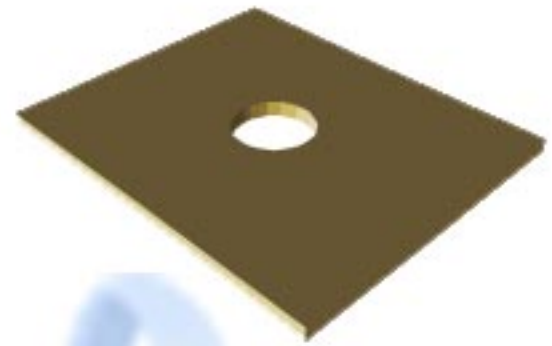
PAD CDM-64 30X30X20 Ø12mm



PAD CDM-62 30X30X10 Ø12mm



PAD CDM-62/71 50X50X8.5 Ø17mm



PAD CDM-61 120X100X5 Ø26mm



PAD CDM-64 40X30X15 Ø13mm



PAD CDM-64 100X55X15 2XØ15mm



WASHER CDM-61 50/26/5 + 36/26/10