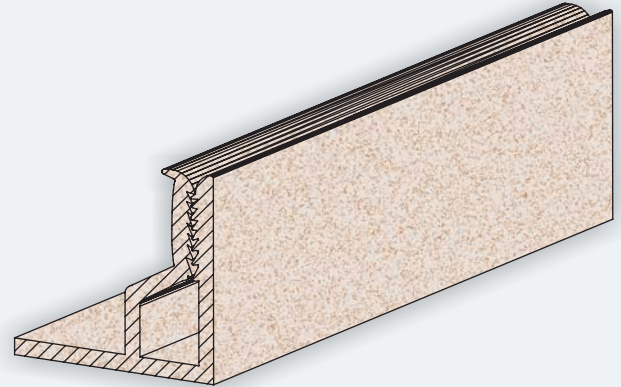


Introduction

FABRIWALL fabric stretch system is a site built acoustic solution on Wall and Ceiling. The framework is comprised of fire-retardant rigid plastic locking channels on which almost all fabrics can be fixed to achieve the desirable finish.

FABRIWALL can be applied over virtually any surfaces with minimum wall preparation. Since the system is customised, design changes can be made on site and thus give the greatest design flexibility. Fabrics could be replaced in future for maintenance purpose.



Product Features

- One track suit for all purposes.
- Provides high-end acoustic performance.
- Built on site, not require precise site measurements and minimize the damage during shipping.
- Install quickly on wall and ceiling.
- Flexibility on-site coordination.
- Easy maintenance.
- Any configuration or shape is possible.

FABRIWALL Wall/Ceiling Treatment System

The system shall consist the following components:

1. Rigid plastic locking channels (Type LF);
2. High performance open-cell absorptive substrate core;
3. Acoustic transparent fabric.

Select from NOISESTOP's series or Lucia or Cara colour ranges. Customer's own fabric choice upon review and approval.

Product Specification

Product	Thickness	Core
LF	25 - 50mm	Polyester Fibreglass

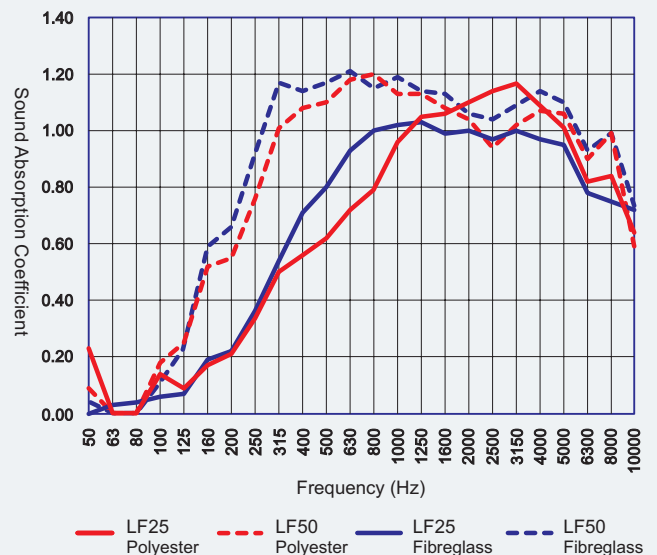
Flammability Performance

Fabric	Test Method	Description
Cara	BS 476 Part 7 Class 1 BS EN 1021-1:2006 (Cigarette)	Flammability

Acoustics Performance

Testing in accordance with ASTM C423-09a Standard Test Method for Sound Absorption and Sound Absorption Coefficients by the Reverberation Room Method.

LF25 and LF50 Sound Absorption Coefficient



Windsor Cinema, Hong Kong

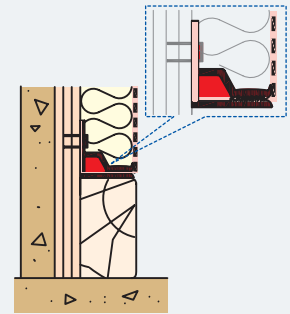
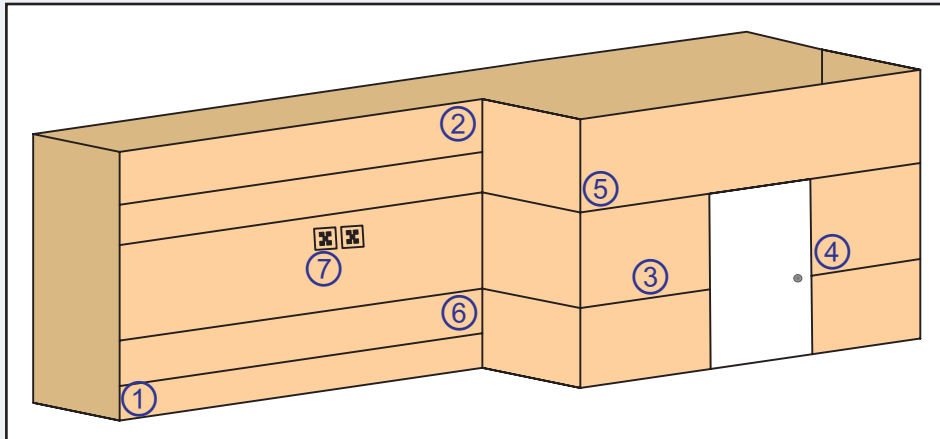
Acoustics Performance

LF25 and LF50 Sound Absorption Coefficient

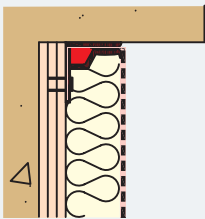
1/3 Octave Band and 1/1 Octave Band Sound Absorption Coefficient																				
Core	Hz	100	125	160	200	250	315	400	500	630	800	1000	1250	1600	2000	2500	3150	4000	5000	NRC
Polyester Infill	25 mm	0.09	0.08	0.18	0.23	0.38	0.55	0.65	0.69	0.84	0.39	1.02	1.08	1.12	1.11	1.04	1.12	1.08	1.02	0.80
		0.12		0.39			0.73			0.83			1.09			1.07				
	50 mm	0.11	0.23	0.59	0.66	0.92	1.17	1.14	1.17	1.21	1.15	1.19	1.14	1.13	1.06	1.04	1.09	1.14	1.10	1.10
		0.31		0.92			1.17			1.01			1.07			1.07				
Fibreglass Infill	25 mm	0.09	0.12	1.14	0.30	0.55	0.61	0.66	0.84	0.99	0.95	1.07	1.00	1.05	1.06	1.10	1.07	1.07	1.06	0.90
		0.45		0.49			0.83			1.16			1.08			1.11				
	50 mm	0.18	0.25	0.52	0.55	0.76	1.01	1.08	1.10	1.18	1.20	1.13	1.13	1.08	1.04	0.94	1.02	1.07	1.06	1.00
		0.32		0.77			1.12			1.15			1.02			1.05				

Typical Details

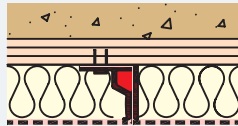
LF25 Square Edge System



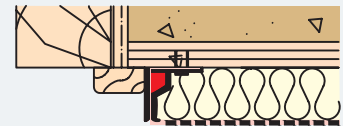
① Edge @ Wood Skirting



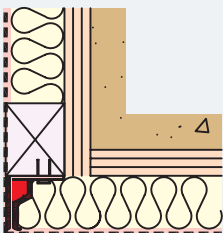
② Edge @ Ceiling



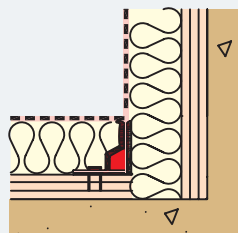
③ Joints



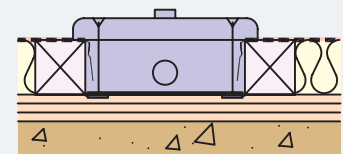
④ Edge @ Door Jamb



⑤ Outside Corner



⑥ Inside Corner



⑦ Electric Socket